

Technical Specification SEA CHEETAH



DEEP SEA SUPPLY



IMO No.: 9369629
 DNV ID No.: 168805
 MMSI : 210 465 000
 Call Sign : C4SE2

MAIN DESCRIPTION

Type : Khiam Chuan Q486
 Classification : A1E Offshore Support Vessel AH
 FIFI 1+AMS+DPS2+ACCU
 Yard : Jaya Shipbuilding & Eng.
 Yard built No.: 858
 Country built : Singapore
 Delivered : 2007
 Flag : Cyprus
 Port of registry : Limassol
 Owner : DESS Cyprus Limited

MEASUREMENT

Lenght oa : 75,40 m
 Lenght bpp : 67,16 m
 Breath moulded : 16,80 m
 Depth moulded : 7,50 m
 Draught max: 6,10 m
 Corresponding DWT : 2301
 Gross tonnage GT : 2952
 Net tonnage NT : 885
 Air draft @ 6,50 mt EK: 26,60 m
 Speed svc/max. : 15 knots
 ISM-Responsible : Deep Sea Supply Management
 (Singapore) Pte Ltd

CARGO CAPACITY

Deck cargo: 1000 t
 Deck area: 485 m2
 Deck strength: 7,5 t/m2
 Fuel (gasoil) : 1210 m3
 Liquid Mud : 561 m3
 Drillwater / Ballast : 512 m3
 Base Oil: 150 m3
 Dry Bulk : 226 m3
 Fresh Water : 493 m3

DISCHARGE RATE

Loading / Discharging station : liquids 4/ bulk 5" camlock
 Fuel discharge rate : 200 m3/h
 Mud discharge rate : 75 m3/h @ 24 bar
 Drillwater discharge rate : 200/115 m3/h x 9/2 bar
 Dry bulk discharge rate : abt 100 ts/hr, 5,6 bar (80 psi)
 Base Oil discharge rate : 61 m3/h @ 9 bar
 Fresh Water discharge rate : 150 m3/h @ 9 bar

MACHINERY / PROPULSION

Main Engine set 1 : 2 x 5,520 kW each at 750 rpm
 Propulsion Aft : 2 x 4D1000 LIPS CCP
 Rudders : 2 x 8.61 m2/rudder
 Total BHP : 15 000
 Total Kw: 11 040

Bow Thruster: 2x K-88b3, 680 kW
 Stern Thruster : 1x K-88B3, 680 kW
 Generators : 2x LSA 53 S75-4P 2300 kW
 Diesel Generators : 2 x 370 kW
 Emergency Generator : 1 x 76 kW
 Shore Connection: 440V, 3 Phase, 60 Hz

PERFORMANCE / CONSUMPTION **ACCOMMODATION**

| | | | |
|---------------------------------|---------------------|-----------------------------|-------------------------|
| Bollard Pull continous : | 176,9 ts | Cabins : | 10x1 berth + 15x2 berth |
| Max Speed / Consumption: | 15,0 kn @ 44 m3/day | Accommodation for maximum : | 40 persons |
| Service Speed / Consumption: | 12,0 kn @ 22 m3/day | Air conditioning system : | All cabins |
| Economical Speed / Consumption: | 10,0 kn @ 18 m3/day | Mess / Dayroom : | 1 mess/ 1 dayroom |
| DP Standby Mode Consumption: | 15 m3/day | Cool store / Freezer : | 11,5 m3/ 11,5 m3 |
| Port Consumption : | 3 m3/day | Dry Provision : | 15 m3 |

DECK / AHL EQUIPMENT

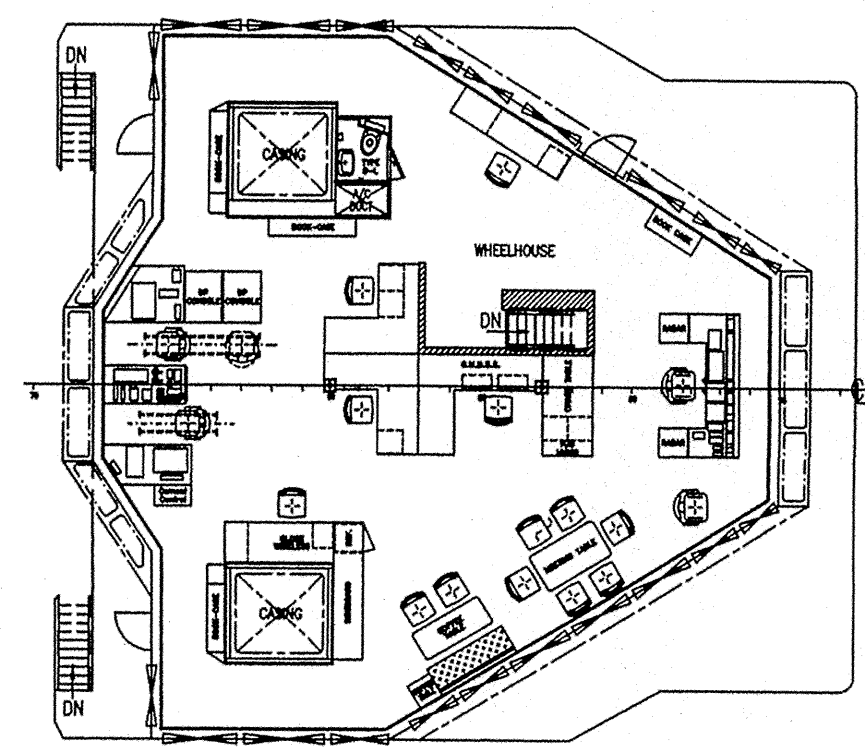
| | | | |
|-------------------------------|------------------------------------|----------------------|---------------------------------|
| Tugger Winches : | 2 x Brattvaag 17 tons | Chain Lockers: | Port 127 m3 + Starboard 137 m3 |
| Deck Crane : | 2.2 ts/ 12m - 5,9 ts/ 6m telescope | Towing Wire: | 1500 m of 76 mm |
| Windlass: | 1 x Brattvaag 17 tons | Spare Tow Wire : | 1500 m of 76 mm |
| Capstans: | 2 x Brattvaag 2 tons | Work Wire A/H : | 800 m of 76 mm |
| Anker Handling/Tow winch: | 350 ts pull/ 450 ts break | Grappels for Chain : | 1 x 250 ts SWL |
| Dim: AH winch drum/ flange/l | 1050/2850/3500 mm. 3500m/ 76mm | Forged J Chaser: | 1 x 250 ts SWL |
| Dim: Tow winch drum/ flange/l | 1060/2850/3500 mm. 3500m/ 76mm | Spooling device: | Yes on AH/Towing drum |
| Storage Reel 1: | 1000/3000/3300 mm. 3500m/ 76mm | Shark Jaws: | 1 x Karm forks 650 ts SWL |
| Storage Reel 2: | 1000/3000/2000+500mm. 2100m/ 76mm | Towing Pins: | 2 x 300 mt SWL |
| Rig Chain Gipsies: | 1 x 76 + 1 x 84 mm | Stern Roller: | 4.5 m x 2.3 m/ 2.5 m SWL 500 mt |

RESCUE EQUIPMENT

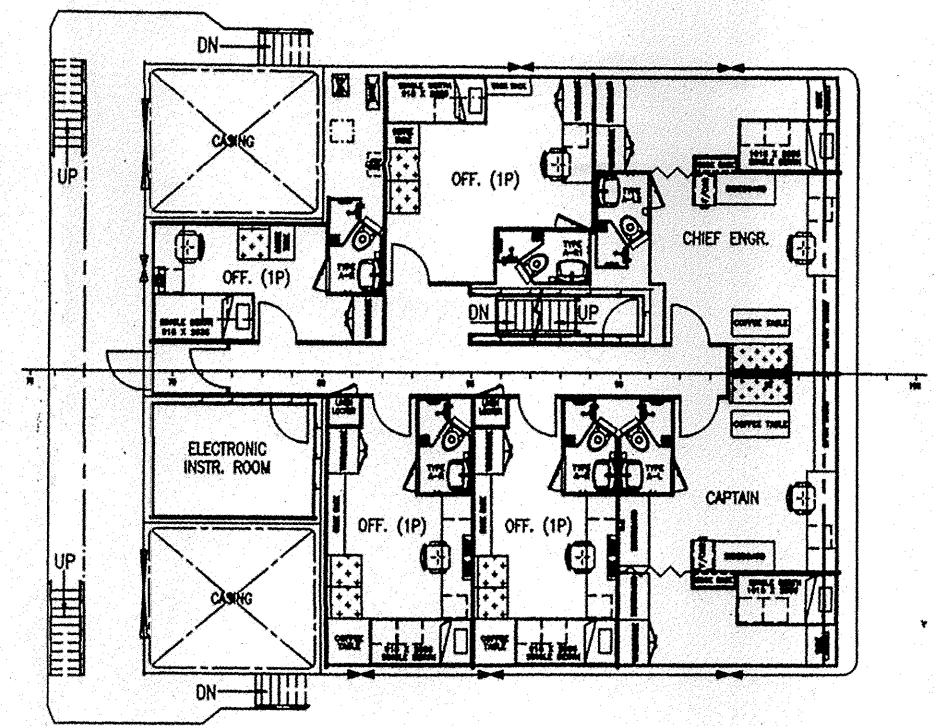
| | | | |
|---------------------------|--------------------------------|------------------|-----------------|
| Hospital : | Yes | Survival Suits : | 44 |
| Fire Fighting equipment : | FiFi Class 1 | GMDSS VHF's : | 3 x Mc Murdo R2 |
| MOB Boats: | 1 x Narwhal SV 480 - 6 persons | Life jackets : | 53 |
| Radar transponders : | 2 x Mc Murdo S4 Rescue SART | Life rafts: | 6 Solas each 25 |
| Emergency Beacon: | 1 x Mc Murdo E3A | Rescue nets: | 2 x rope nets |

NAVIGATION AND COMMUNICATION EQUIPMENT

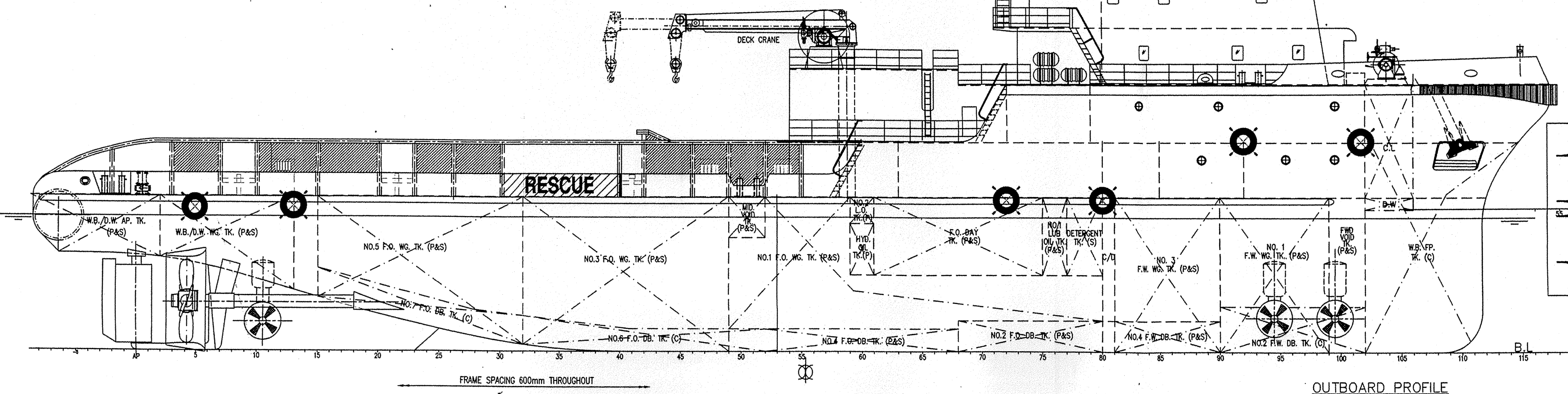
| | | | |
|----------------------------|------------------------------|-------------------|-------------------------|
| DP System (class 2): | Kongsberg SDP 21 AUTR | GMDSS Sea Area: | GMDSS- GOC certificates |
| HPR reference: | Kongsberg HiPAP 500 | MF/HF Radio: | Furuno FS 2570C |
| DGPS reference: | 2 x Kongsberg Seatex DPS 116 | DSC Receiver: | Furuno FS 2570C |
| DP reference: | Fanbeam, MDL | VHF 1: | Furuno FN-8800S |
| Radar 3 cm: | Furuno FR-2115 | VHF 2: | Furuno FN-8800S |
| Radar 10 cm: | Furuno FR-21-2135S | VHF 3: | 3 units Mc Murdo |
| Gyro: | 3 x Sperry C-Plath | UHF: | N.A. |
| Autopilot: | Pilotstar D | Portable UHF: | 6 units |
| Navtex : | Furuno NX-700 | Mobile Telephone: | Yes |
| Joystick: | Kongsberg C-joy | Iridium: | Furuno Felcom - 15v |
| AIS: | Furuno FA-100 | Mini-M: | Thrane & Thrane, Sailor |
| Echo Sounder: | Furuno FE-700 | Sat C 1: | Furuno Felcom - 15v |
| Speed log: | Furuno Doppler Log DS-80 | V Sat: | Shipequip |
| Satellite Navigator (GPS): | Furuno GP-90 | Intercom System: | Vingtor |
| Wind Sensors: | 2 x Kongsberg OMC | | |



BRIDGE DECK PLAN



OFFICER DECK

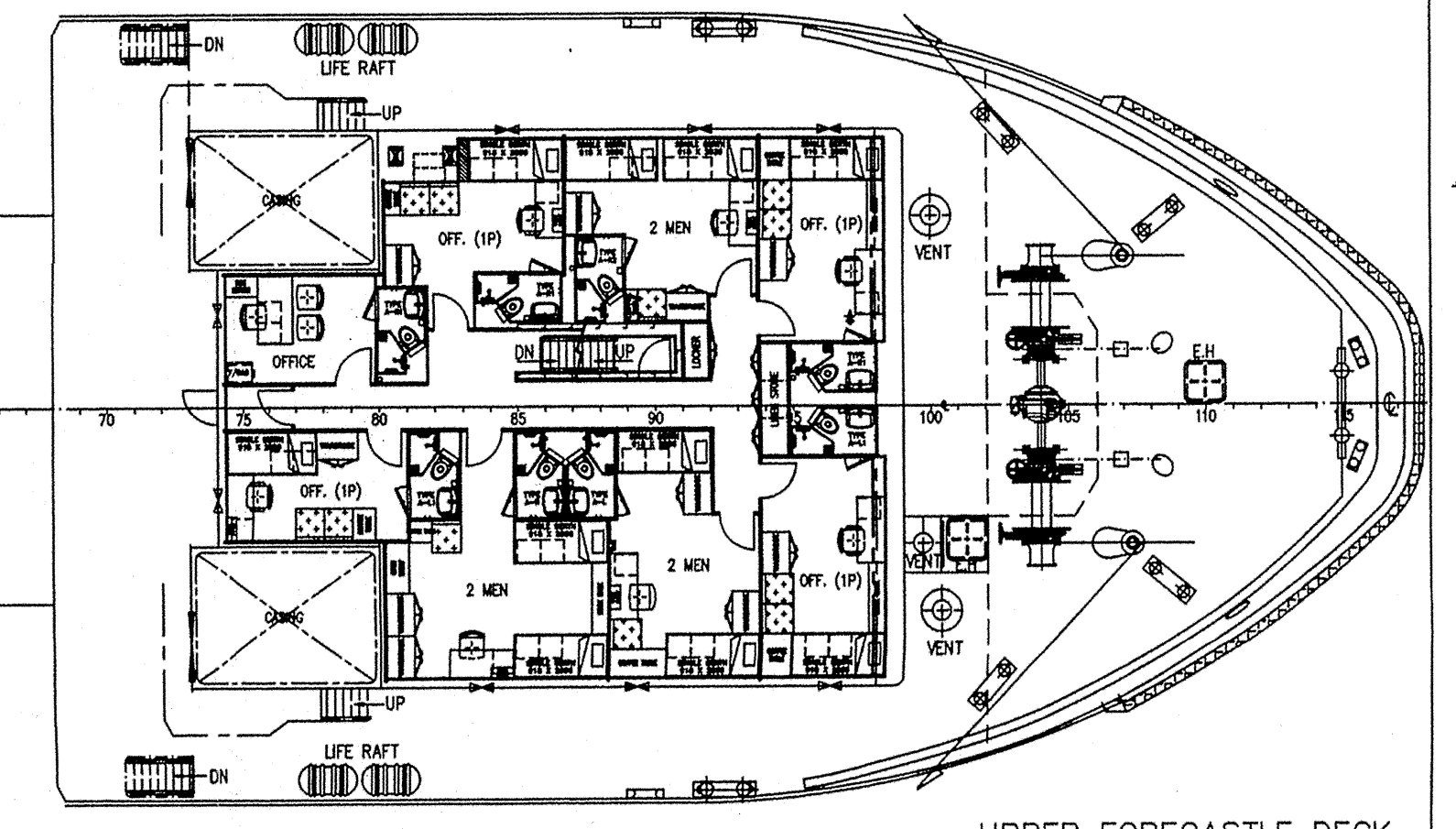


OUTBOARD PROFILE

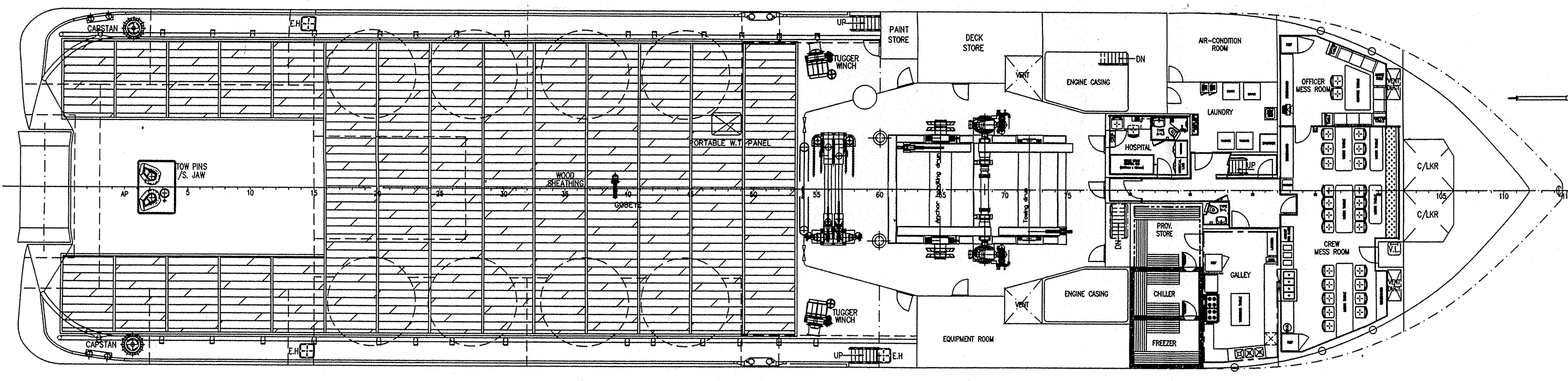
PRINCIPAL DIMENSIONS

| | |
|--|---------------------|
| LENGTH (O.A.) | 75.400 M |
| LENGTH (W.L.) | 72.000 M |
| LENGTH (B.P.) | 67.160 M |
| BEAM (MLD.) | 16.800 M |
| DEPTH (MLD.) | 7.500 M |
| MAX. DRAFT (MLD.) | 6.100 M |
| TOTAL DWT AT 6.10M | 2500 TONS |
| FUEL OIL | 1240 M ³ |
| FRESH WATER | 490 M ³ |
| DRILL WATER / W.B. | 510 M ³ |
| MUD | 560 M ³ |
| BASE OIL | 150 M ³ |
| CLEAR DECK AREA | 485 M ² |
| DECK CARGO (DECK LOADING = 7.5T/M ²) | 1000 TONS |
| DRY BULK TANKS (4x2000 FT ³ =8000 FT ³) | 226 M ³ |
| MAIN PROPULSION ENGINE | 2 X 5520 kW |
| SPEED (TRIALS) | 15.0 KNOTS |
| BOLLARD PULL | 170 TONS |
| COMPLEMENT (CREW 18P, SPEC. PERSONNEL 22P) | 40 MEN |

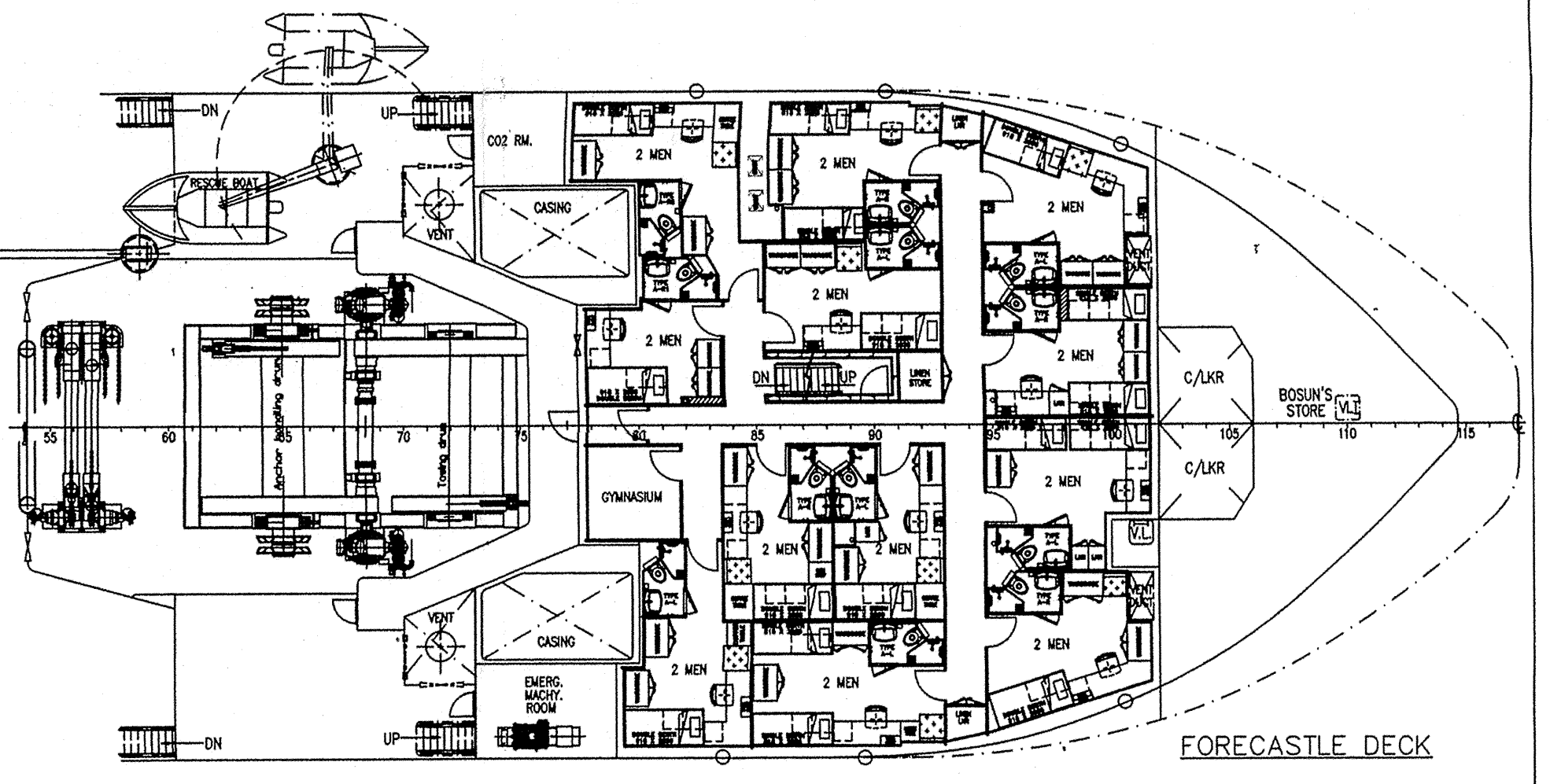
CLASS & NOTATION : ABS * A1 (E) OFFSHORE SUPPORT VESSEL AH, TOWING VESSEL, FIRE FIGHTING VESSEL CLASS 1, * AMS * DPS-2, * ACCU



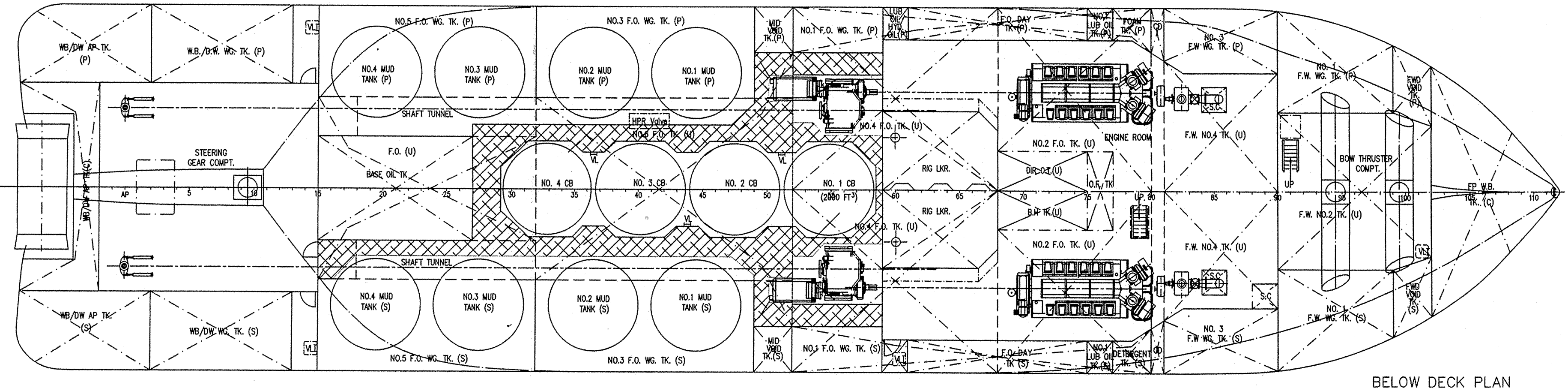
UPPER FORECASTLE DECK



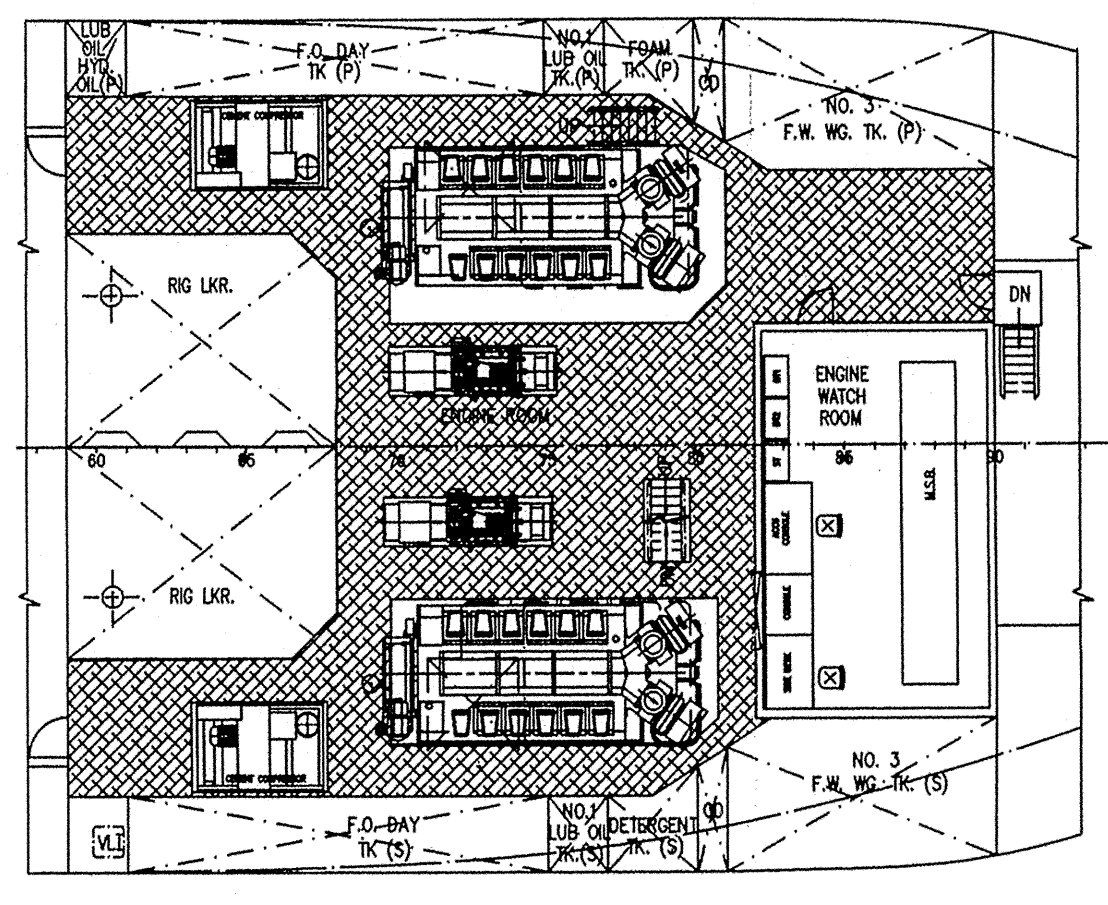
MAIN DECK PLAN



FORECASTLE DECK



BELOW DECK PLAN



TWEEN DECK PLAN

| | | | |
|---|--|------------------|----------------|
| 10 | Update Main Deck, Forecastle Deck & Engine Watch Room Arr. | HMH | 07.03.06 |
| 9 | Accommodation Rearranged | FWB | 16.11.05 |
| REV. | DETAILS OF MODIFICATION | BY | DATE |
| BUILDER | | | |
| Jaya JAYA SHIPBUILDING & ENGINEERING PTE LTD | | | |
| CONSULTANT | | | |
| KC KHIAM CHUAN MARINE PTE LTD | | | |
| 15, HILLVIEW TERRACE, SINGAPORE 669226 TEL: 67753383 (6 LINES) FAX: 67753788 EMAIL : kcmdesign@pacific.net.sg | | | |
| PROJECT | | | |
| 75m ANCHOR HANDLING SUPPLY VESSEL | | | |
| TITLE | | | |
| GENERAL ARRANGEMENT | | | |
| CLASSIFICATION | | HULL NO. 858/859 | |
| DRAWN | CHECKED | SCALE | DRAWING NUMBER |
| FEIQIANG | | 1:150 | KCM/Q486 - G1 |
| 18-03-05 | | | 10 |

THIS DOCUMENT AND THE INFORMATION IT CONTAINS IS COPYRIGHT AND REMAINS THE PROPERTY OF KHIAM CHUAN MARINE PTE LTD. IT IS NOT TO BE COPIED IN WHOLE OR IN PART OR DISCLOSED TO ANY THIRD PARTY FOR ANY PURPOSE WHATSOEVER WITHOUT PRIOR WRITTEN CONSENT.