

Technical Specification SEA EAGLE 1



DEEP SEA SUPPLY



IMO No.: 949480
 DNV ID No.: 9182570
 MMSI : 212 041 000
 Call Sign : 5BVJ2

MAIN DESCRIPTION

Type : Khiam Chuan Q486
 Classification : A1E Offshore Support Vessel AH
 FIFI 1+AMS+DPS2+ACCU
 Yard : Jaya Shipbuilding & Eng.
 Yard built No.: 878
 Country built : Singapore
 Delivered : 2009
 Flag : Cyprus
 Port of registry : Limassol
 Owner : DESS Sea Eagle Ltd.

MEASUREMENT

Lenght oa : 75,40 m
 Lenght bpp : 67,16 m
 Breath moulded : 16,80 m
 Depth moulded : 7,50 m
 Draught max: 6,10 m
 Correspondign DWT : 2100
 Gross tonnage GT : 2952
 Net tonnage NT : 885
 Air draft @ 6,50 mt EK: 25,95
 Speed svc/max. 12/15 knot
 ISM-Responsible : Deep Sea Supply Management
 (Singapore) Pte Ltd

CARGO CAPACITY

Deck cargo: 800 t
 Deck area: 600 m2
 Clear deck area: 485 m2
 Deck strength: 7,5 t/m2
 Fuel (gasoil) : 1240 m3
 Liquid Mud : 560 m3
 Drillwater / Ballast : 510 m3
 Base Oil: 130 m3
 Dry Bulk : 226 m3 (4 x 2000 cu ft)
 Fresh Water : 490 m3
 Foam/ Detergent: 7,5 m3/ 7.5 m3

DISCHARGE RATE

Loading / Discharging station : Aft/ Staboard and port Mid. Ship
 Fuel discharge rate : 1 x 200 m3/h @ 9 bar
 Mud discharge rate : 2 x 75 m3/h @ 24 bar
 Drillwater discharge rate : 1 x 200 m3/h @ 9 bar
 Dry bulk discharge rate : 2 x 20 m3/min @ 80 psi
 Base Oil discharge rate : 1 x 61 m3/h @ 9 bar
 Fresh Water discharge rate : 1 x 150 m3/h @ 9 bar

MACHINERY / PROPULSION

Main Engine set 1 : 1 x 4500 kw (6120 BHP) @ 750 rpm
 Main Engine set 2 : 1 x 4500 kw (6120 BHP) @ 750 rpm
 Propulsion Aft : 2 x Wartsila-Lips CCP
 Rudders : 2 x Becker Rudder S-A 2050/253 F2
 Total BHP : 12240
 Total Kw: 9000
 Bow Thruster: 2 x 680 kw
 Stern Thruster : 1 x 680 kw
 Generators : 2 x 2300 kw
 Diesel Generators : 2 x 410 kw @ 1800 rpm
 Emergency Generator : 1x 60 kw @ 1800 rpm
 Shore Connection: 440V 3 Phase 60 Hz

PERFORMANCE / CONSUMPTION **ACCOMMODATION**

Bollard Pull continous :	151	Cabins :	10x1 berth + 15x2 berth
Max Speed / Consumption:	15,0 kn @ 44 m3/day	Accommodation for maximum :	40 persons
Service Speed / Consumption:	12,0 kn @ 22 m3/day	Air conditioning system :	All cabins
Economical Speed / Consumption:	10,0 kn @ 18 m3/day	Mess / Dayroom :	1 mess/ 1 dayroom
DP Standby Mode Consumption:	5 m3/day	Cool store / Freezer :	11,5 m3/ 11,5 m3
Port Consumption :	2 m3/day	Dry Provision :	15 m3

DECK / AHL EQUIPMENT

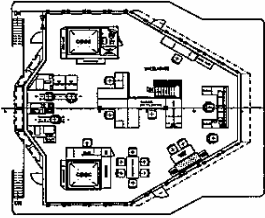
Tugger Winches :	2 x Brattvaag 10 tons	Shark Jaws:	2 x 300 karm fork
Crane 1:	1 x 5,6 tn @ 6m/2,2 tn at 12,2 m	Towing Wire:	1500m of 76mm
Windlass:	2 x Brattvaag 17 tons	Spare Tow Wire :	1500m of 76 mm
Capstans:	2 x Brattvaag 10 tons	Work Wire A/H :	800m of 76mm
Anker Handling/Tow winch:	1 x Brattvaag 300 ts pull/450 break & 1 x Brattvaag 300 ts pull/450 break &	Grapnels for Chain :	4 Prong Grapnel 250 ton SWL
Rope reels:	6,7 tn suit for 2000m 76mm wire 6,7 tn suit for 2000m 76mm wire	Forged J Chaser:	250 ton SWL
Rig Chain Gipsies:	2 x 90 mm chain size	Wire spooling:	Anker Handling/Tow Winch
Chain Lockers:	162,88 m3/ 176,43 m3		
Towing Pins:	2 x karm fork		
Stern Roller:	4,5 m x 2,3 m diam SWL 500 t		

RESCUE EQUIPMENT

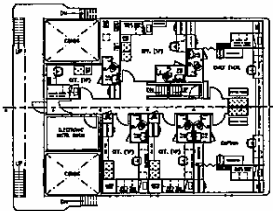
Hospital :	Yes	Survival Suits :	58 x IMPERIAL
Fire Fighting equipment :	FiFi Class 1	GMDSS :	A3
MOB Boats:	1 x Narwhal SV 480	Life jackets :	63 x Viking PV-9500
Radar transponders :	2 x Mc Murdo	Life rafts:	6 x Viking 25DK
Emergency Beacon:	1 x Mc Murdo		

NAVIGATION AND COMMUNICATION EQUIPMENT

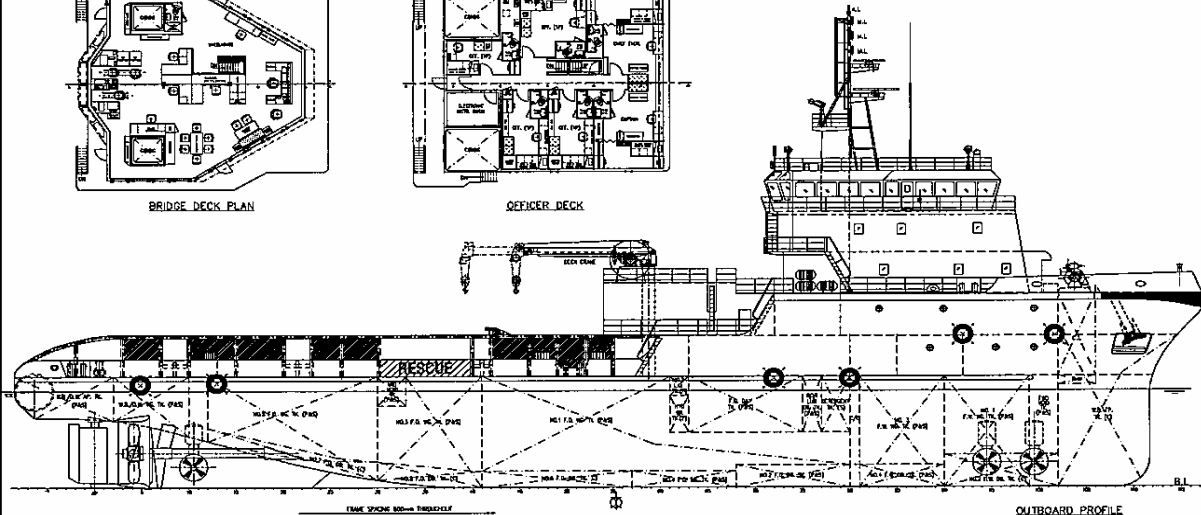
Radar 3 cm:	Furuno FR-2115	GMDSS Sea Area:	A3
Radar 10 cm:	Furuno FR-2135S	MF/HF Radio:	Furuno RC-1800T
Radar Slave:	1 conn. FR-2135S	DSC Receiver:	FS 2570
Direction Finder:	2 x ARP26	VHF 1:	Furuno FN-8800S
Gyro:	C Plath Navigat	VHF 2:	Furuno FN-8800S
Autopilot:	Anschuetz Pilot Star 4	VHF 3:	
Navtex :	Furuno NX-700	UHF:	N.A.
Joystick:	Kongsberg C-joy	Portable UHF:	N.A.
AIS:	Furuno FA-100	Mobile Telephone:	Nokia
Echo Sounder:	Furuno FE-700	Iridium:	N.A.
Speed log:	Doppler log Furuno DS-80	Mini-M:	N.A.
Satellite Navigator (GPS):	Furuno GP-150	Sat C 1:	1 x Furuno Felcom 15
Wind Sensors:	Yes	V Sat:	Shipequip
DP:	Kongsberg DP2	Intercom System:	Yes



BRIDGE DECK PLAN



OFFICER DECK

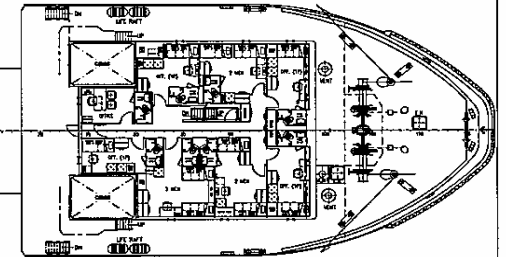


OUTBOARD PROFILE

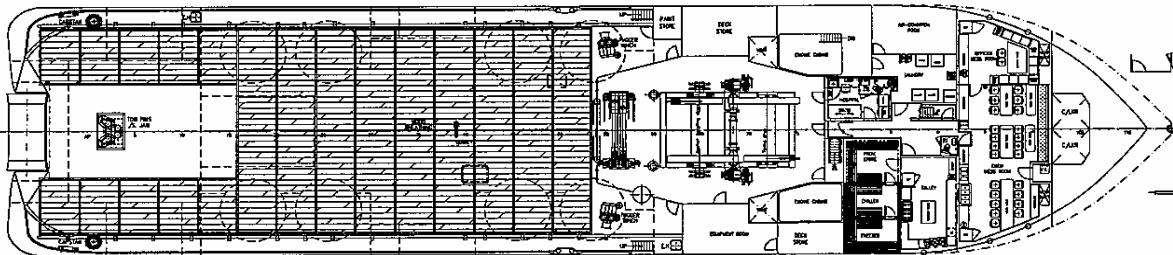
PRINCIPAL DIMENSIONS

LENGTH (O.A.)	75,400 M
LENGTH (W.L.)	72,000 M
LENGTH (B.P.)	67,150 M
BEAM (M.L.D.)	18,800 M
DEPTH (M.L.D.)	7,500 M
MAX. DRAFT (M.L.D.)	6,100 M
DWT. AT 6.10M	2300 TONS
FUEL OIL	1240 M ³
FRESH WATER	490 M ³
DRILL WATER / W.B.	510 M ³
MUD	560 M ³
BASE OIL	130 M ³
CLEAR DECK AREA	485 M ²
DECK CARGO (DECK LOADING = 7.5T/M ²)	800 TONS
DRY BULK TANKS (4x2000 FT ³ = 8000 FT ³)	226 M ³
MAIN PROPULSION ENGINE	2 X 4500 KW
SPEED (TRIALS)	14.0 KNOTS
BOLLARD PULL	140 TONS
COMPLEMENT	40 MEN

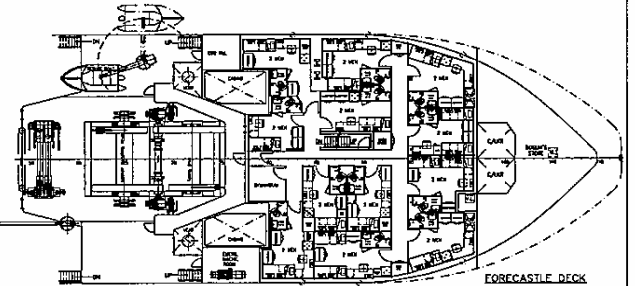
CLASS & NOTATION : ABS + A1 Ⓞ OFFSHORE SUPPORT VESSEL AH, TOWING VESSEL
FIRE FIGHTING VESSEL CLASS 1, + AMS + DPS-2, + ACCU



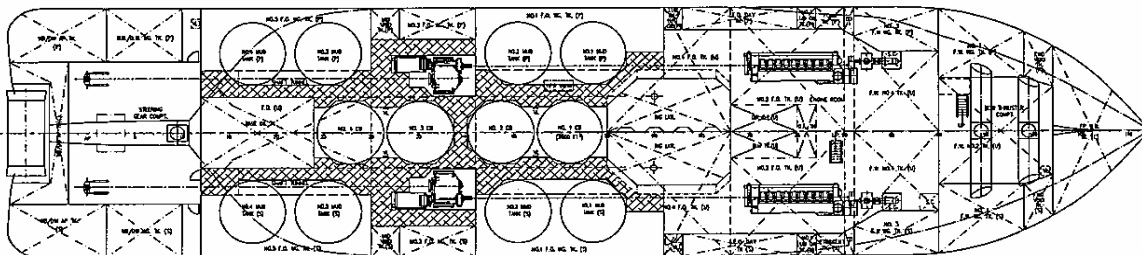
UPPER FORECASTLE DECK



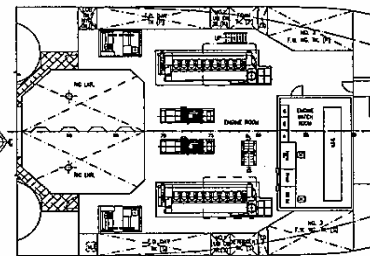
MAIN DECK PLAN



FORECASTLE DECK



BELOW DECK PLAN



TWEEN DECK PLAN

1	REVISIONS	DATE	BY	CHKD.
1	REVISIONS	DATE	BY	CHKD.
<p>Jaya JAYA SHIPBUILDING & ENGINEERING PTE LTD</p> <p>KC KHAM CHUAN MARINE PTE LTD</p> <p>15, HILLVIEW TERRACE, SINGAPORE 669228 TEL: 67753383 (6 LINES) FAX: 67753788 EMAIL: kcm@design@docific.net.sg</p>				
<p>PROJECT: 75m ANCHOR HANDLING SUPPLY VESSEL</p>				
<p>TITLE: GENERAL ARRANGEMENT</p>				
<p>DESIGNED BY: 875/878</p>		<p>SCALE: 1:150</p>		
<p>CHECKED BY: 18-03-05</p>		<p>DRAWING NUMBER: KCM/0486(A)-01</p>		
<p>DATE: 18-03-05</p>		<p>SHEET: 1</p>		

NOT OCCUPY AND THE INFORMATION IS CONTAINED HEREIN IS THE PROPERTY OF JAYA SHIPBUILDING & ENGINEERING PTE LTD. IT IS NOT TO BE REPRODUCED, COPIED, OR IN ANY MANNER DISCLOSED TO ANY THIRD PARTY FOR ANY PURPOSE WITHOUT THE WRITTEN CONSENT.