

# Technical Specification SEA OCELOT



**DEEP SEA SUPPLY**



IMO No.: 9387023  
 ABS ID No.: 7172447  
 MMSI : 212538000  
 Call Sign : 5BLU2

MAIN DESCRIPTION		MEASUREMENT	
Type :	Khiam Chuang Q486	Lenght oa :	70.0 m
Classification :	ABS, +A1, Fire Fighting Vessel Class 1 Offshore Support Vessel AH, E, +AMS, +ACCU, +DPS-2	Lenght bpp :	66.80 m
Yard :	Jaya Shipbuilding & Engineering Pte.Ltd	Breath moulded :	16.80 m
Yard built No.:	H855	Depth moulded :	7.50 m
Country built :	Singapore	Draught max:	6.10 m
Delivered :	2007	Correspondign DWT :	2149.6
Flag :	Cyprus	Gross tonnage GT :	2708
Port of registry :	Limassol	Net tonnage NT :	812
Owner :	Dess Cyprus Limited	Air draft @ 6,10 m EK:	26.60 m
		Speed svc/max.	12 / 14kts
		ISM-Responsible :	Thome Ship Management

CARGO CAPACITY		DISCHARGE RATE	
Deck cargo:	800 mt	Loading / Discharging station :	two (one each side) 4" camlocks liquid / bulk
Deck area:	450 m <sup>2</sup>	Fuel discharge rate :	200 m <sup>3</sup> /h @ 9 bar
Deck strength:	7.5 mt/m <sup>2</sup>	Mud discharge rate :	2 x 75 m <sup>3</sup> /h x 24 bar
Fuel (gasoil) @ 98% :	1260 m <sup>3</sup>	Drillwater discharge rate :	150 m <sup>3</sup> /h @ 9/2 bar
Liquid Mud :	490 m <sup>3</sup>	Dry bulk discharge rate :	about 100 t/h @ 5.6 bar (80 psi) 2 x 20m <sup>3</sup> /min
Drillwater / Ballast :	510 m <sup>3</sup>	Base Oil discharge rate :	61 m <sup>3</sup> /h @ 9 bar
Base Oil :	110 m <sup>3</sup>	Fresh Water discharge rate :	120 m <sup>3</sup> /h @ 9 bar
Dry Bulk :	226 m <sup>3</sup> (4 x 2000ft <sup>3</sup> )		
Fresh Water :	360 m <sup>3</sup>		

MACHINERY / PROPULSION			
Main Engines :	2 x Wartsila 8L32, 4000 kW (5440BHP) @ 750 rpm	Bow Thrusters :	2 x Kawasaki KT-88B3, 680 kW, 10T thrust tunnel
Propulsion Aft :	2 x CPP	Stern Thruster :	1 x Kawasaki KT-88B3, 680 kW, 10T thrust tunnel
Rudders :	2 x Becker rudder, S-AA 2050/243 F2	Shaft Generators :	2 x Leroy Somer LSA 53 S75-4P, 2300 kW
Reduction Gearbox :		Diesel Generators :	2 x Caterpillar 3408 DITA / Stamford HCM 534D1, 410 kW
Total BHP :	10,880 BHP	Emergency Genset :	Caterpillar 3057T, 72 kW
Total Kw:	8000 kW	Shore Connection:	440V, 3 Phase, 60 Hz

PERFORMANCE / CONSUMPTION		ACCOMODATION	
Bollard Pull continous :	136.8	Cabins :	10 x 1 berth and 15 x 2 berths
Max Speed / Consumption:	14.0 knots @ 40 m <sup>3</sup> /day	Accomodation for maximum :	40 persons
Service Speed / Consumptio	12.0 knots @ 22 m <sup>3</sup> /day	Air condioning system :	all cabins
Economical Speed / Consum	10.0 knots @ 18 m <sup>3</sup> /day	Mess / Dayroom :	1 mess / 1 dayroom
DP Standby Mode Consump	15 m <sup>3</sup> / day	Cool store / Freezer :	11.5 m <sup>3</sup> / 11.5 m <sup>3</sup>
Port Consumption :	3 m <sup>3</sup> / day	Dry Provision :	15 m <sup>3</sup>
		Hospital	1 x 1 berth

**DECK / AHL EQUIPMENT**

Windlass :	1 x Brattvaag 17 ts	Chain Lockers :	port 127 m <sup>3</sup> , starboard 137 m <sup>3</sup>
Capstans :	2 x Brattvaag 10 tons @ 0-25 m/min	Wire spooling device :	for Anchor Handling Towing Winch only
Tugger Winches :	2 x Brattvaag 10 tons @ 0-24 m/min	Stern Roller :	4.5m x 2.3m/2.5m SWL 500 mt
Crane :	1 x North Pacific Crane MCT-1040, telescopic boom, 2.2 mt @ 12 m, 5.9 mt @ 6 m	Grappels for Chain :	4 Prong Grapnel 250 Ton SWL
Storage reel 1:	1 x Brattvaag Ø1000mm / Ø3000mm x 3300mm, 20 tons @ 0-16 m/min, capacity of 3500m / 76mm	J Chaser :	250 Ton SWL
		Towing Wire :	1500 m of 76 mm
		Spare Tow Wire :	809 m of 76 mm
Storage reel 2:	1 x Brattvaag LAL13220130206307, Ø1000mm / wire length Ø3000mm x (2000+500)mm, 20 tons @ 0-16 m/min, capacity of 2100m / 76mm wire length	Work Wire A/H :	1500 m of 76 mm
		Rig Chain Gypsis:	2 x 76mm + 1 x 84mm
		Shark Jaws	1 set Karmfork SWL300mt
1 AH winch/ Towing winch :	1 x Brattvaag 300 ts pull / 300 ts break, deductable towing drum/winch, Ø1050mm / Ø2850mm x 3500mm, capacity of 2000m / 76mm wire length &	Tow Pins	2 x electro-hydraulic with flaps

**RESCUE EQUIPMENT**

Hospital :	Yes	Life jackets :	53 x Viking PV-9500
Fire Fighting equipment :	FiFi Class1	Survival Suits :	46 x Viking PS5006
MOB Boats:	1 x Narwhal SV 480, 6 man, 40HP Outboard	GMDSS VHF's :	3 x McMurdo R2
Rescue nets :	2 x rope nets	Radar transponders :	2 x McMurdo S4
Life rafts:	6 x Viking 25DK	Emergency Beacon:	1 x McMurdo E3A

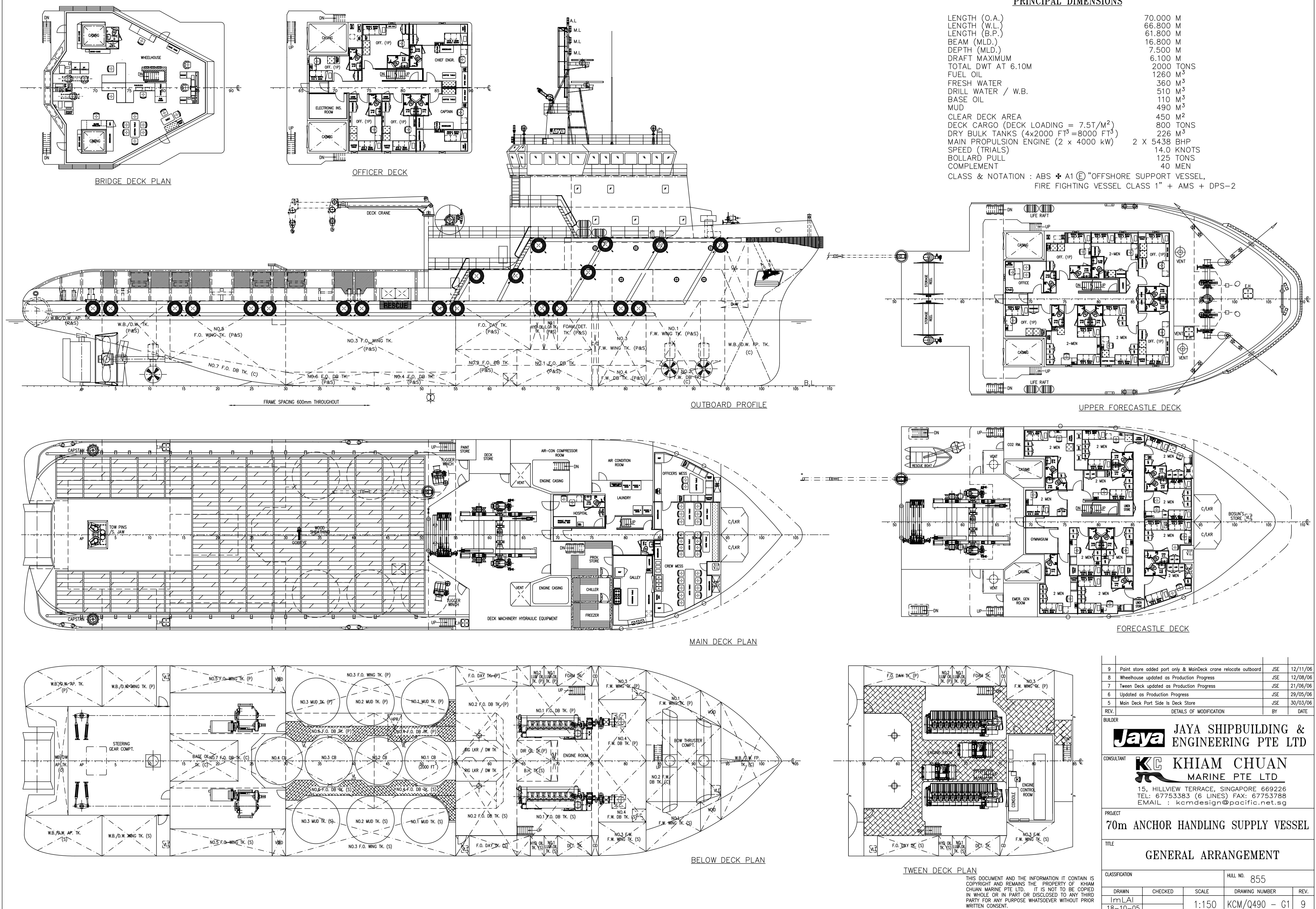
**NAVIGATION AND COMMUNICATION EQUIPMENT**

DP :	Kongsberg Simrad / SDP-21	DGPS :	1 x Furuno GP-90
Radar 3 cm:	Furuno FR-2115 ARPA	Echo Sounder :	Furuno FE-700
Radar 10 cm:	Furuno FR- 2135S	Speed log :	Doppler Log Furuno DS-80
GMDSS Radio Console :	Furuno 250 w	AIS :	Furuno FA-100
Rack console :	RC- 1800T	Weather faximile :	Furuno FAX-207
Inmarsat-C SSAS :	Furuno Felcom-15V	Gyro:	C Plath Navigat X MK1
Inmarsat-C :	Furuno Felcom-15	Batteryless Telephone System :	Vingtor VSP
VHF radiotelephones :	3 x Furuno FM-8800S	PA/Talkback system :	Vingtor CTB-20
Navtex :	Furuno NX-700	Fleet 77 phone :	SAILOR Thrane & Thrane
Magnetic compass :	1 x C. Plath Reflecta 1	Mini-M phone :	SAILOR Thrane & Thrane
Autopilot:	Furuno Pilotstar D		

**PRINCIPAL DIMENSIONS**

LENGTH (O.A.)	70.000 M
LENGTH (W.L.)	66.800 M
LENGTH (B.P.)	61.800 M
BEAM (MLD.)	16.800 M
DEPTH (MLD.)	7.500 M
DRAFT MAXIMUM	6.100 M
TOTAL DWT AT 6.10M	2000 TONS
FUEL OIL	1260 M <sup>3</sup>
FRESH WATER	360 M <sup>3</sup>
DRILL WATER / W.B.	510 M <sup>3</sup>
BASE OIL	110 M <sup>3</sup>
MUD	490 M <sup>3</sup>
CLEAR DECK AREA	450 M <sup>2</sup>
DECK CARGO (DECK LOADING = 7.5T/M <sup>2</sup> )	800 TONS
DRY BULK TANKS (4x2000 FT <sup>3</sup> = 8000 FT <sup>3</sup> )	226 M <sup>3</sup>
MAIN PROPULSION ENGINE (2 x 4000 kW)	2 X 5438 BHP
SPEED (TRIALS)	14.0 KNOTS
BOLLARD PULL	125 TONS
COMPLEMENT	40 MEN

CLASS & NOTATION : ABS + A1 @ "OFFSHORE SUPPORT VESSEL,  
FIRE FIGHTING VESSEL CLASS 1" + AMS + DPS-2



9	Point store added port only & Main Deck crane relocate outboard	JSE	12/11/06
8	Wheelhouse updated as Production Progress	JSE	12/08/06
7	Tween Deck updated as Production Progress	JSE	21/06/06
6	Updated as Production Progress	JSE	29/05/06
5	Main Deck Port Side Is Deck Store	JSE	30/03/06
REV.	DETAILS OF MODIFICATION	BY	DATE

**BUILDER**  
**Jaya** JAYA SHIPBUILDING & ENGINEERING PTE LTD

**CONSULTANT**  
**KC** KHIAM CHUAN MARINE PTE LTD  
 15, HILLVIEW TERRACE, SINGAPORE 669226  
 TEL: 67753383 (6 LINES) FAX: 67753788  
 EMAIL: kcmdesign@pacific.net.sg

**PROJECT**  
70m ANCHOR HANDLING SUPPLY VESSEL

**TITLE**  
GENERAL ARRANGEMENT

CLASSIFICATION	HULL NO.	855		
DRAWN	CHECKED	SCALE	DRAWING NUMBER	REV.
ImLAI		1:150	KCM/Q490 - G1	9
18-10-05				

THIS DOCUMENT AND THE INFORMATION IT CONTAIN IS COPYRIGHT AND REMAINS THE PROPERTY OF KHIAM CHUAN MARINE PTE LTD. IT IS NOT TO BE COPIED IN WHOLE OR IN PART OR DISCLOSED TO ANY THIRD PARTY FOR ANY PURPOSE WHATSOEVER WITHOUT PRIOR WRITTEN CONSENT.