

Technical Specification SEA BASS



DEEP SEA SUPPLY



IMO no: 9387190
 DNV id no : 27350
 MMSI : 212 870 000
 Call Sign : 5BAL2

MAIN DESCRIPTION	MEASUREMENT
------------------	-------------

Type :	UT 755 L	Lenght oa :	71,90 m
Classification :	DNV +IAI,SF E0 Clean Dynpos-Auto	Lenght bpp :	66,00 m
Yard :	Cochin Shipyard LTD	Breath moulded :	16,00 m
Place built :	Cochin	Depth moulded	7,00 m
Country built :	India	Draught max :	5,83 m
Delivered :	feb.07	Gross tonnage GT :	2100
Flag :	Cypros	Correspondign DWT :	3250 mt
Port of registry :	Limasol	Net tonnage NT :	1150
Owner :	Dess Cypros LTD	Speed svc/max.	14.3 Knots
		ISM-Responsible :	Thome Management PTE LTD

CARGO CAPACITY	DISCHARGE RATE
----------------	----------------

Deck cargo:	1600 t	Fuel discharge rate :	1 off 200 m3/h - 9 bar
Deck area:	680 m2	Mud discharge rate :	2 off 75 m3/h - 18 bar
Deck strength:	5,0 t / m2	Brine discharge rate :	1 off 75 m3/h - 18 bar
Fuel (gasoil) :	1000 m3	Drillwater discharge rate :	1 off 200 m3/h - 9 bar
Liquid Mud :	970 m3	Dry bulk discharge rate :	2 off 27 m3 min 5,6 bar
Brine :	390 m3	Base Oil discharge rate :	1 off 150 m3/h - 9,0 bar
Drillwater/Ballast :	850 m3	Fresh Water discharge rate :	1 off 200 m3/h - 9 bar
Base Oil :	200 m3		
Dry Bulk :	315 m3 (11250 cuft)		
Fresh Water :	840 m3		

MACHINERY / PROPULSION			
------------------------	--	--	--

Main Engine set :	2x2725 bhp /825 rpm	Stern Thruster :	1 off 590 Kw (800 bhp)
Propellers :	2 off Ulstein CPP	Generators :	2 x 1280 kW Shaft
Rudders :	2 off T1650	Diesel Generators :	2 x 250 kW
Total BHP :	5450 BHP	Emergency Generator :	1 x 72 kW
Total Kw :		Shore Connection:	440 v ,60 Hz
Bow Thrusters:	2 off 590 kW (800bhp)		

PERFORMANCE / CONSUMPTION**ACCOMODATION**

		The vessel to have accommodation and equipment for 10 officers / crew and 12 passengers as follows:
Max Speed/Consumption :	14,3 Knots/ 20 t	
Service Speed/Consumtion:	11,0 Knots / 17 t	Tween deck: 2 off 4-men cabins
Economical Speep/Consumtion :	9.0 Knots / 14 t	Main deck: 1 off Change / Washroom
Standby Mode :	2-3 knots / 4t	1 off Toilet room/ 1 off Spare room
Port Consumption :		F.C.-deck Galley and provision rooms Mess and dayroom 1 off Laundry/ Drying room, 1 off store room
Roll reduction system :	4 off ulstein passive roll red.tanks	A-deck 5 off 1-bed cabins for crew 1 off 4-men cabin/ 1 off Aircond. room
		B-deck 5 off 1-bed cabins for officers/crew
		Bridge deck Wheelhouse, Toilet room

DECK

Tugger Winch :	Brattvaag 2 off 10 t	Two off starting air compressors. Sperre HL2 / 105
Deck Crane :	3t/10-16m TTS-GPT 115	Two off starting air bottles.
Windlass:	Brattvaag PH SNF 210-40	One off instrument air drier, one instrument air tank.
Capstans:	Brattvaag 2 off 8 t CMX2208	Two off Bilge/fire pumps. All Weiler AEB1E0750-IE One off Bilge water separator. Four Reefer plugs Two 440V + Two 220V CO2 fire fighting system in engine room.

RESCUE EQUIPMENT

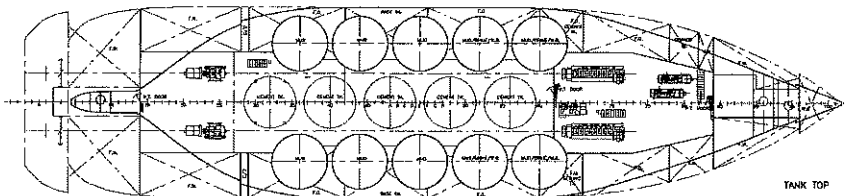
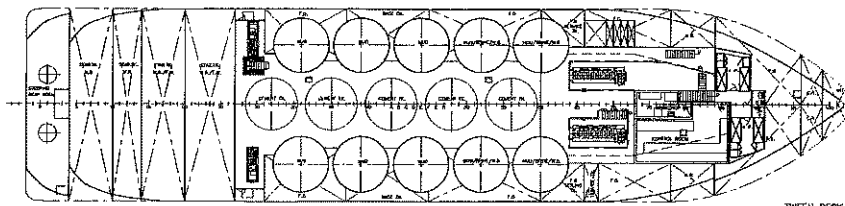
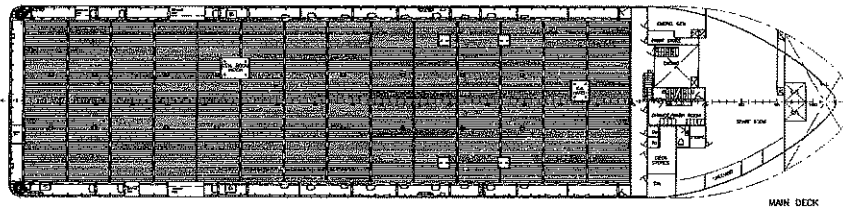
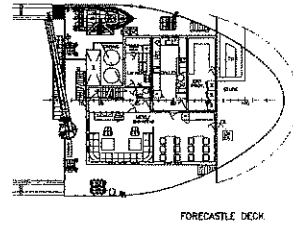
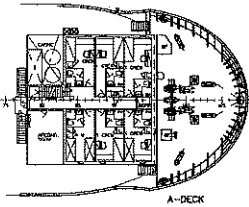
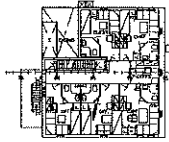
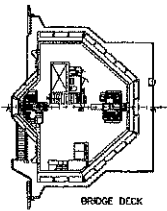
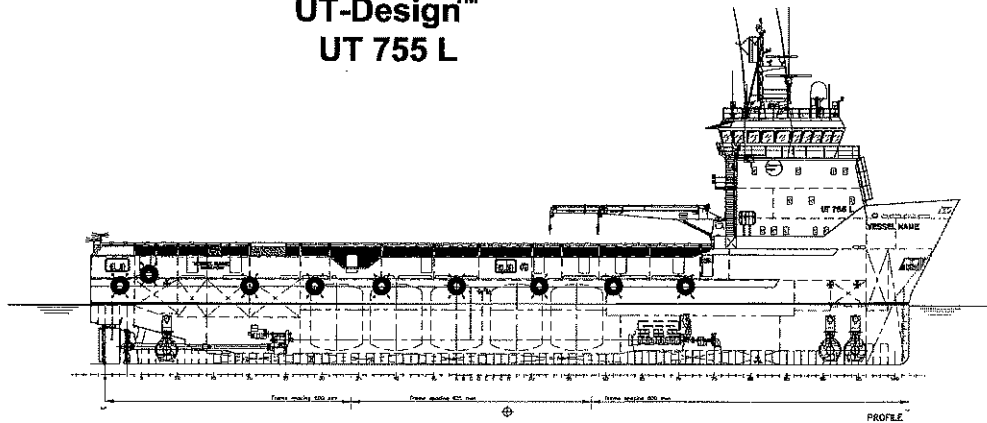
Fire Fighting equipment :	Wather Mist. External Fire system	Survival Suits :	22 persons
MOB Boats:	1x Viking	Life jackets :	22 persons
Radar transponders :		Life rafts:	4 Viking
Emergency Beacon:	2 Off JRC.VHF406 MHz		

NAVIGATION AND COMMUNICATION EQUIPMENT

Dynamic Position :	AUT (DP1) Kongsberg	GMDSS Sea Area:	A3
Radar 3 cm:	JRC.JMA 9922 SXA	MF/HF Radio :	JRC.JSS - 296
Radar 10 cm:	JRC.JMA 9932 SA	DSC Receiver :	JRC.JHS - 32B
Radar Slave :	One on aft bridge	VHF 1 :	JRC.JHS - 7
Direction Finder :	John Lillie & Gillie LTD	VHF 2:	JRC.JHS - 7
Gyro:	Tokimec Inc -TG- 8000	VHF 3 :	JRC.JHS - 7
Autopilot:	Tokimec Inc -Pr-6114A-22	Portabel UHF :	4x JRC.JHS - 430
Navtex :	JRC.NCR - 333	Mobil Telephone :	Yes
Joystick :	Poscon(RRM)	Iridium :	Inmarsat Fleet 77
AIS :	JRC.JHS - 182	Mini-M :	Imarsat JRC.JUE 85
Echo Sounder :	JRC.JFE 585	Sat C 1 :	JRC.JQE-3A
Speed log :	JRC.JLF 205	Intercom System :	Yes
Satellite Navigator (GPS)	DGPS.JRC.JRL-77MK2		
Wind Sensors:	John Lillie & Gillie LTD		



Rolls-Royce UT-Design™ UT 755 L



Rolls-Royce UT-Design™		GENERAL ARRANGEMENT	
SHIP NO.	0102240	SCALE	1:200
DESIGN NO.	0272144	DATE	03/10/02
SHIP NAME	STIG JANS	NO. OF DECKS	101
SHIP TYPE	SEA TANKER	NO. OF TANKS	101
DESIGNER	Rolls-Royce	NO. OF DECKS	101
CONTRACT NO.	037102	NO. OF TANKS	101
SHIP NO.	0102240	SCALE	1:200
DESIGN NO.	0272144	DATE	03/10/02
SHIP NAME	STIG JANS	NO. OF DECKS	101
SHIP TYPE	SEA TANKER	NO. OF TANKS	101
DESIGNER	Rolls-Royce	NO. OF DECKS	101
CONTRACT NO.	037102	NO. OF TANKS	101

MAIN PARTICULARS

L.P.P.	APPROX. 72.00 m
BREADTH MLD.	66.80 m
DEPTH MAIN DK.	16.00 m
DESIGN DRAFT	7.00 m
MAX DRAFT	5.00 m
	APPROX. 5.90 m